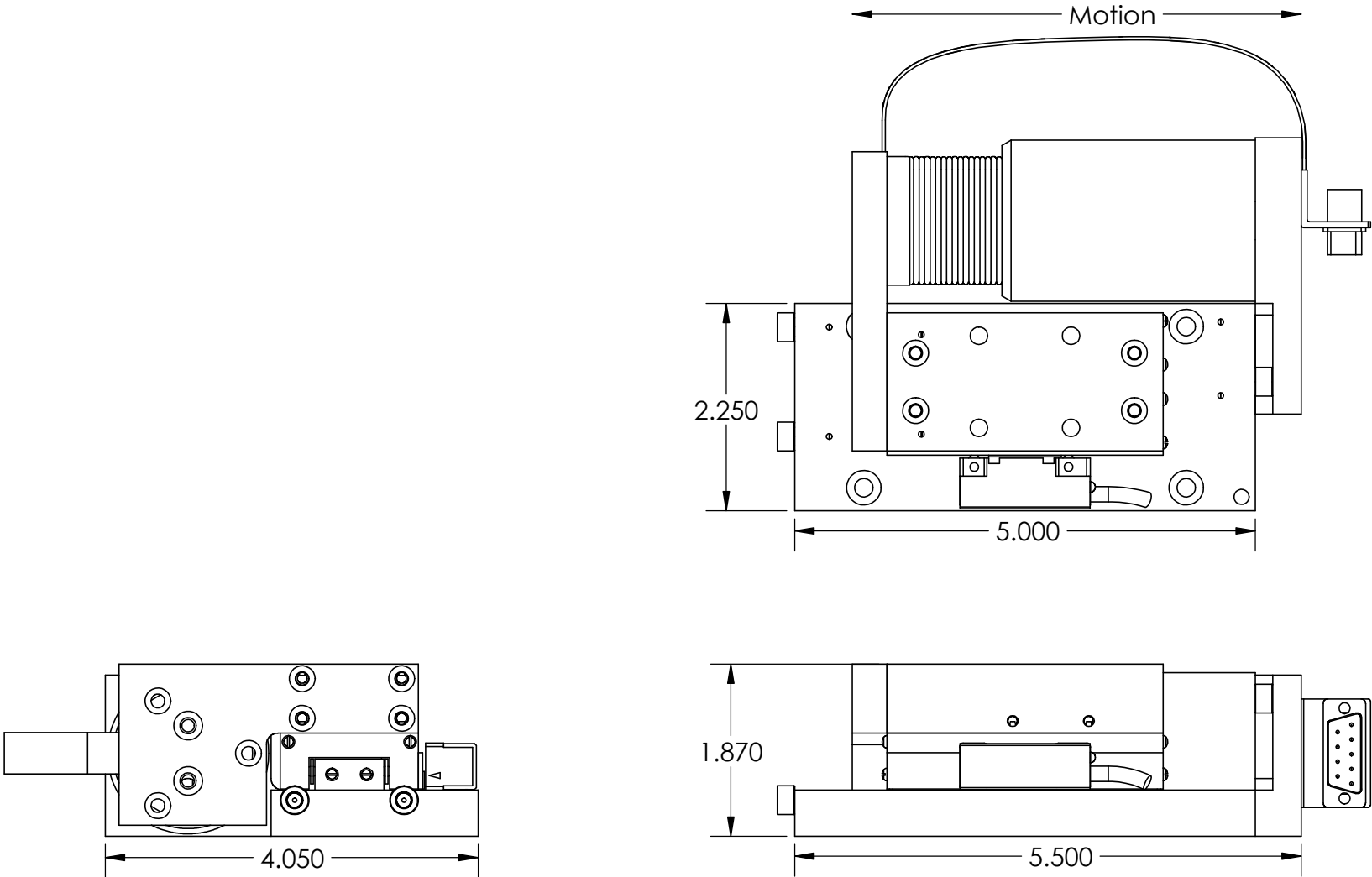


These drawings and specifications are the property of H2W Technologies, Inc. They are issued in confidence and shall not be reproduced, copied, or used without written permission from H2W Technologies, Inc. (www.h2wtech.com)

REVISION TABLE					
REV	ECN#	DESCRIPTION	REV BY	APPROVED	DATE
---	---	Original Drawing	OOG	MPW	3-10-15



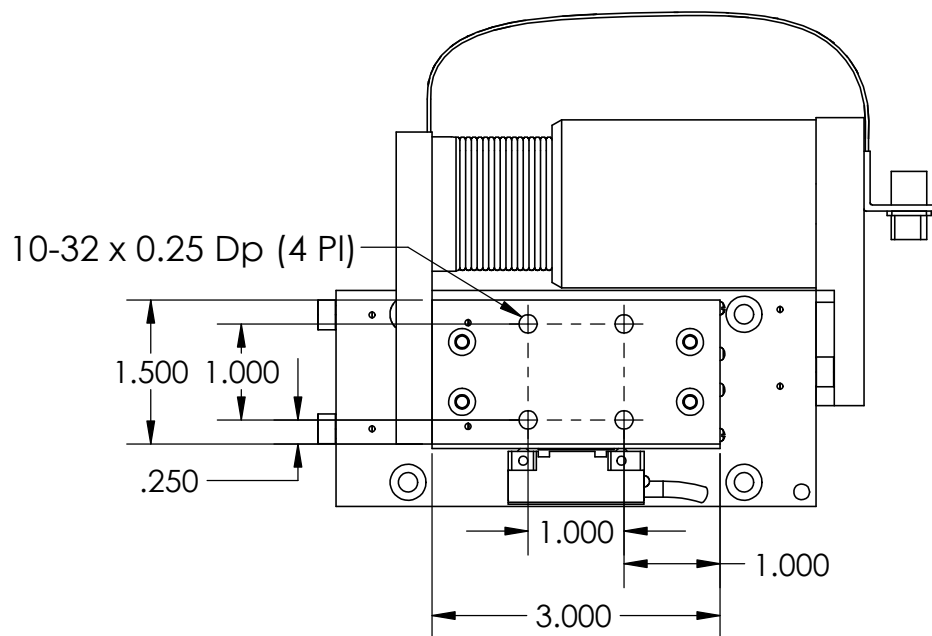
MOTOR SHOWN AT MID-STROKE

UNLESS SPECIFIED OTHERWISE: All dimensions are in inches Standard Tolerances are as follows .XXX ±.005 ANGLES ±1° .XX ±.010 FILLETS .010 .X ±.020 CORNERS .010 Remove All Burs and Sharp Edges	MATERIAL		FINISH		TITLE Voice Coil Positioning Stage Model #: VCS20-020-CR-01-MCS			
	DRAWN OOG	DATE 3-10-15	APPROVED MPW	DATE 3-10-15	DWG # 31-0716	REV ---	SHEET 1 of 3	

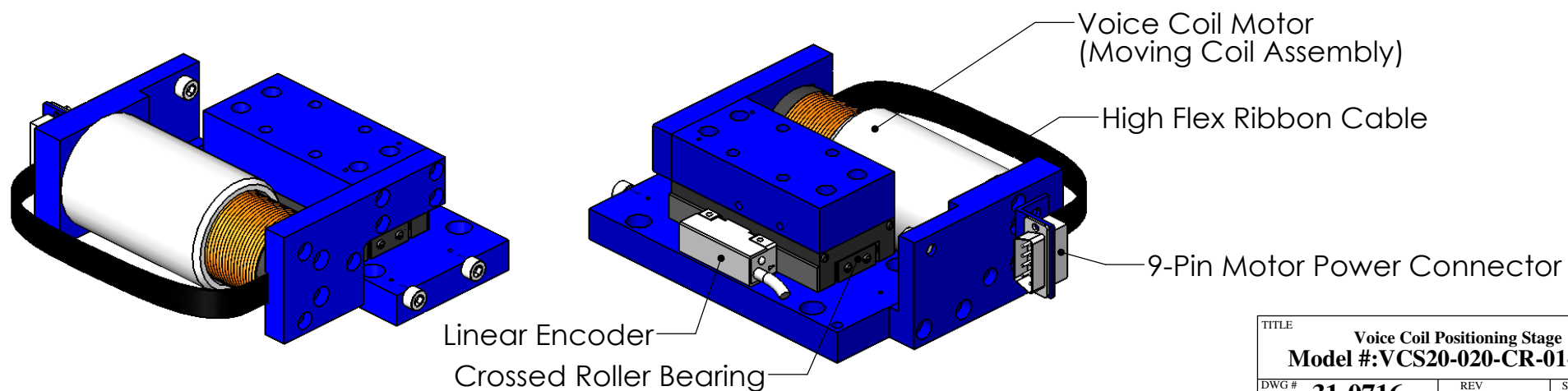
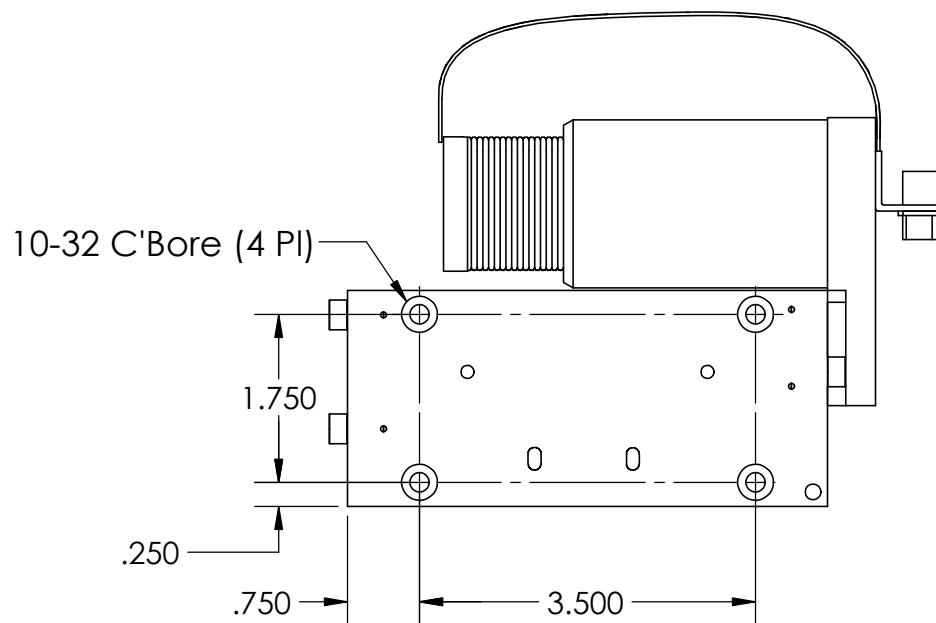


H2W Technologies, Inc.
26380 Ferry Court Santa Clarita, CA 91350 USA
Tel: (661) 291-1620 Fax: (661) 291-1626
www.h2wtech.com

PAYLOAD MOUNTING HOLES



PARTS HAVE BEEN HIDDEN TO SHOW STAGE MOUNTING HOLES



TITLE		
Voice Coil Positioning Stage		
Model #:VCS20-020-CR-01-MCS		
DWG #	REV	SHEET
31-0716	---	2 of 3

VOICE COIL POSITIONING STAGE SPECIFICATIONS		
Motor P/N	NCC20-18-020-1A	
Stroke	2.00"	50.8 mm
Encoder Resolution	1 micron	
Encoder Type	Magnetic	
Bearing Type	Crossed Roller	
Moving Part	Coil Assembly	
Moving Mass	0.95 lbs	0.43 kg
Total Mass	3.75 lbs	1.7 kg
Resistance @ 20C	3.50 ohms	
Inductance @ 20C	3.70 mH	
Electrical Time Constant	1.05 msec	
Motor Constant	0.75 LBS/SQRT(Watt)	3.34 N/SQRT(Watt)
Force Constant	1.4 lbs/Amp	6.1 N/Amp
Back EMF	0.2 V/ips	6.1 V/m/sec
Force @ 100% Duty	2.0 lbs	8.9 N
Power @ 100% Duty	7 watts	
Current @ 100% Duty	1.4 Amps	
Force @ 10% Duty	6.0 lbs	26.7 N
Power @ 10% Duty	64 watts	
Current @ 10% Duty	4.3 Amps	